



FARROW
ESTATE AGENTS



14 Harpham Road, Grimsby, DN36 5TR

Asking price £175,000

3 1 1 D

Floor Plan



Area Map



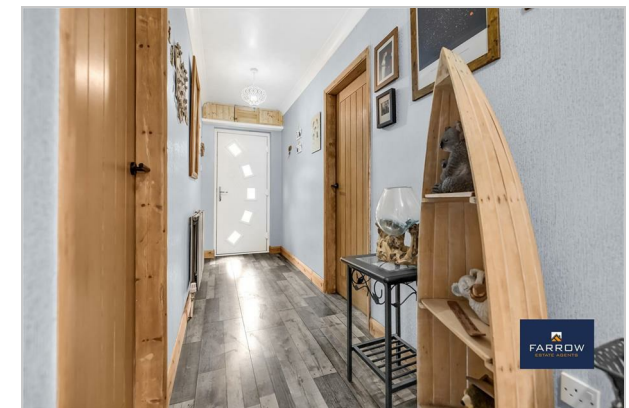
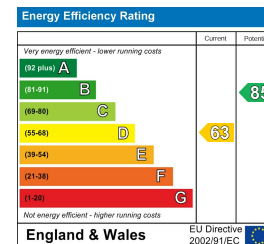
Accommodation

- Stunning Three Bedroom Semi-Detached Bungalow
- Desirable Village Of Marshchapel
- Solid Single Garage & Driveway Parking
- Modern Fitted Kitchen With Built In Appliances
- Gas Central Heating & Double Glazing
- Great Schools Catchment Area
- Beautiful Landscaped Gardens
- Quiet & Calm Residential Area
- Easy Access To Grimsby & Louth Town Centres
- Close To The Village Centre & Amenities

Viewing

Please contact our Farrow Estate Agents Office on 01472 355864 if you wish to arrange a viewing appointment for this property or require further information.

Energy Efficiency Graph



These particulars, whilst believed to be accurate are set out as a general outline only for guidance and do not constitute any part of an offer or contract. Intending purchasers should not rely on them as statements of representation of fact, but must satisfy themselves by inspection or otherwise as to their accuracy. No person in this firm's employment has the authority to make or give any representation or warranty in respect of the property.

26 Abbeygate, Grimsby, DN31 1JY

Tel: 01472 355864 Email: les@farrowestateagent.co.uk farrowestateagent.co.uk